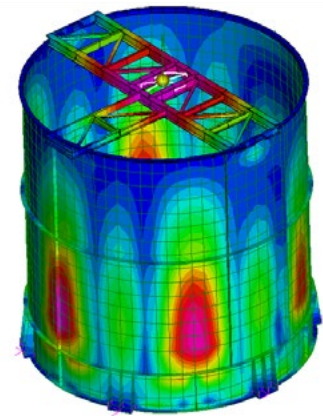
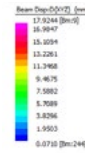
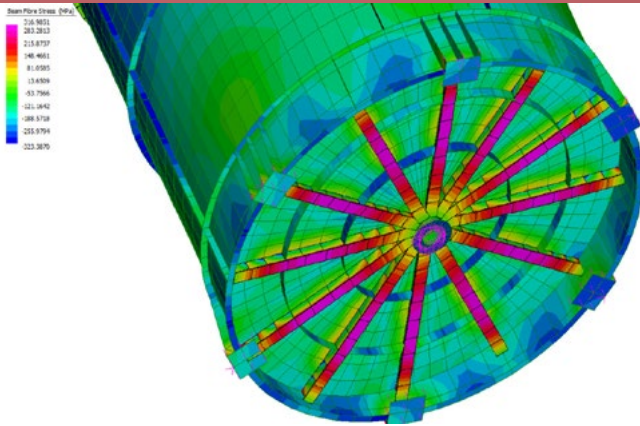


# Sishen Mine Plant Modifications, South Africa



<b>Project Overview:</b>	Sishen Mine Plant Modifications, South Africa
<b>Client:</b>	Anglo American
<b>Location:</b>	South Africa
<b>Completion Date:</b>	2015

## Scope:

ET-Global contributed to the enhancement of the Sishen Mine, a leading iron ore extraction site, by providing structural design expertise for several critical plant modifications aimed at improving operational efficiency and capacity.

## Key Contributions:

- Designed upgrades for the thickener unit, crucial for optimizing the separation process and water recovery.
- Engineered an extension to the existing workshop, facilitating better maintenance capabilities and efficiency.
- Provided structural design enhancements for DMS (Dense Media Separation) slimes lines, improving the handling and processing of finer materials.
- Worked in close partnership with Anglo American to ensure the modifications meet the highest standards of safety, efficiency, and environmental compliance.